

EasyIQ Installation Guide

EasyIQ is a software application that helps users create, edit, and download IQ waveforms for use with the SIGLENG SDG6000X series of Arbitrary Waveform Generators. Before using **EasyIQ**, you need to know the configuration requirements and installation procedures of the software.

System Requirements

Before using **EasyIQ** Software, ensure that your computer meets the following configuration requirements.

Hardware Configuration Requirements

- Monitor: 1024x768 or higher resolution
- 1 GHz or faster 32-bit or 64-bit processor
- 2 GB of memory minimum
- 1.5 GB hard disk space (includes 1 GB for Microsoft .NET Framework 4.5.2)

Running Environment

- Operating System: Windows 7 (32/64bit), Windows 10
- National Instruments NI-VISA Library: Version 5.4 or higher
- .NET Framework 4.5.2

NI-VISA

Before using **EasyIQ**, please make sure that you have properly installed the latest version of National Instruments NI-VISA Software.

NI-VISA is a communication library that enables computer communications to instrumentation. There are two available VISA packages: A full version and the

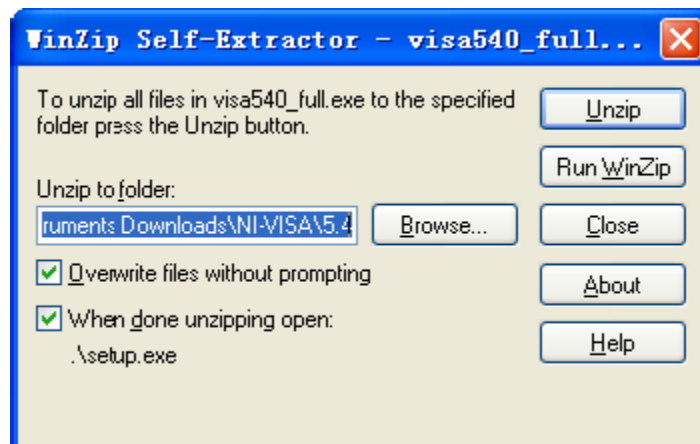
Run-Time Engine. The full version includes NI device drivers and a tool named NI MAX; a user interface to control the device. While the drivers and NI MAX can be useful, they are not required for EasyIQ. The Run-Time Engine is a much smaller file and is recommended for use with EasyIQ.

For convenience, you can get the NI-VISA 5.4 full version from:

<http://www.ni.com/download/ni-visa-5.4/4230/en/>. You can also download [NI-VISA Run-Time Engine 5.4](#) to your PC and install it as default selection. Its installation process is similar with the full version.

Follow these steps to install NI-VISA (The full version of NI-VISA 5.4 is used in this example):

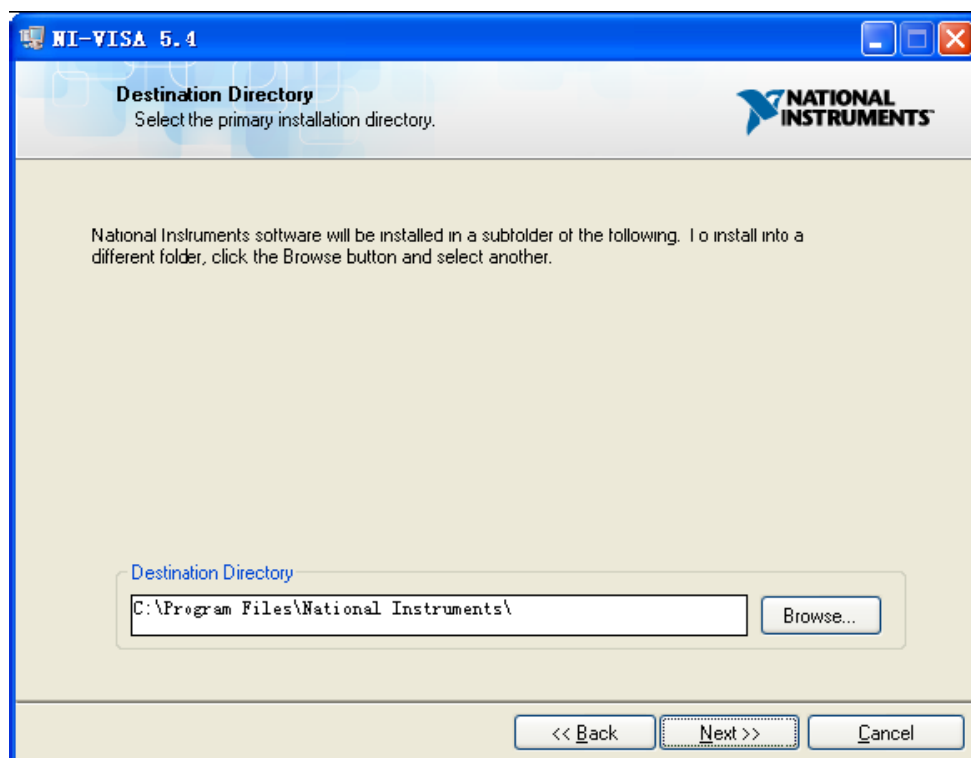
- a. Download the appropriate version of NI-VISA (Run-time engine is recommended)
- b. Double click the visa540_full.exe, dialog shown as below:



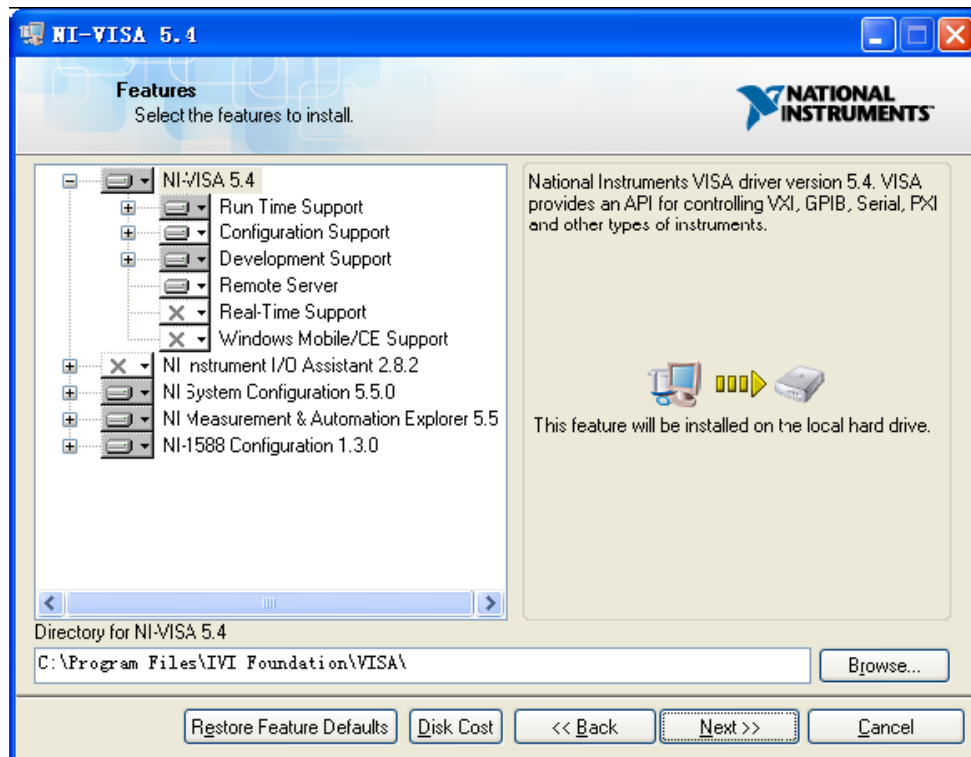
- c. Click Unzip, the install process will launch after unzipping files. If your computer needs to install the .NET Framework 4, it may auto start.



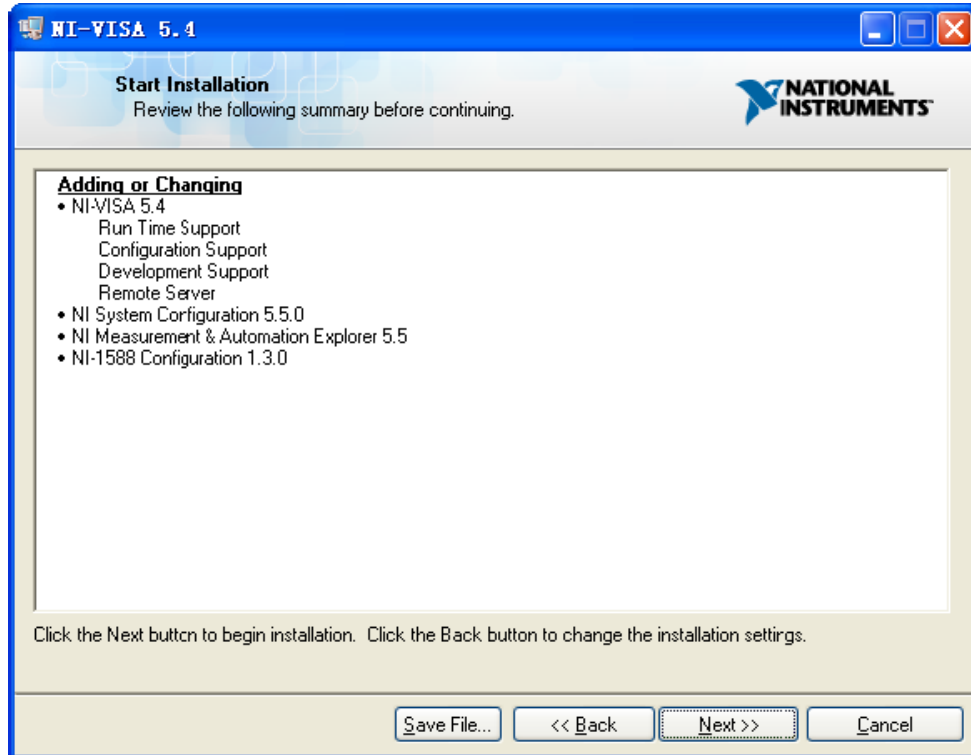
- d. The NI-VISA install dialog is shown above. Click Next to start the installation process.



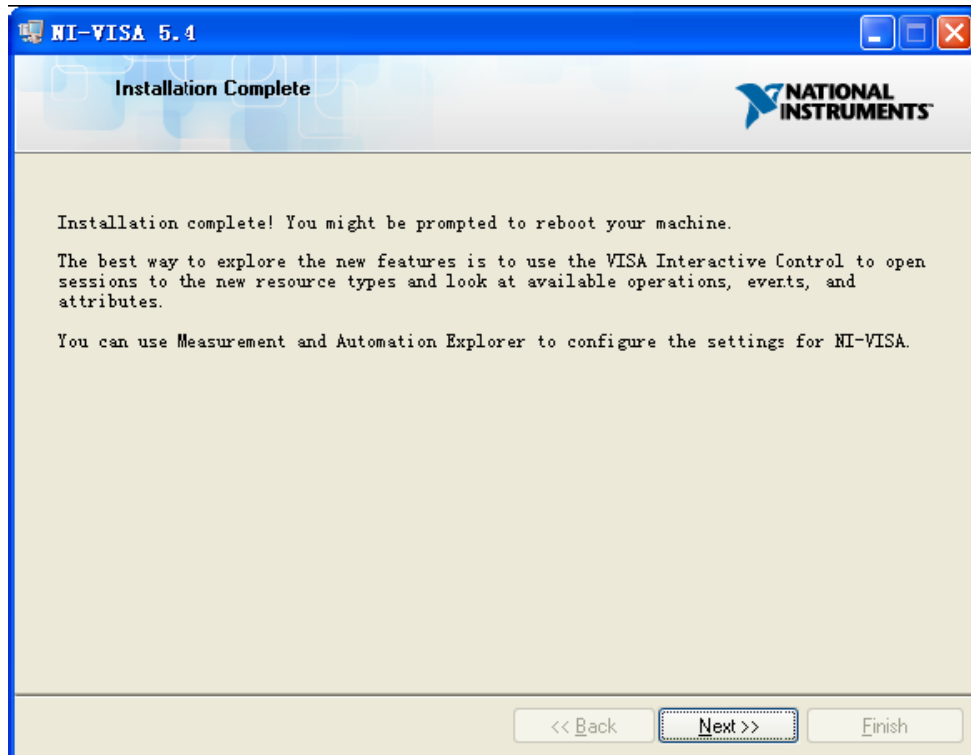
- e. Set the install path, default path is “C:\Program Files\National Instruments\”, you can change it, if you prefer. Click Next, dialog as shown above.



- f. Click Next twice, in the License Agreement dialog, select the “I accept the above 2 License Agreement(s).”, and click Next, dialog as shown below:



g. Click Next to begin installation.



h. Now the installation is complete, reboot your PC.

.NET Framework

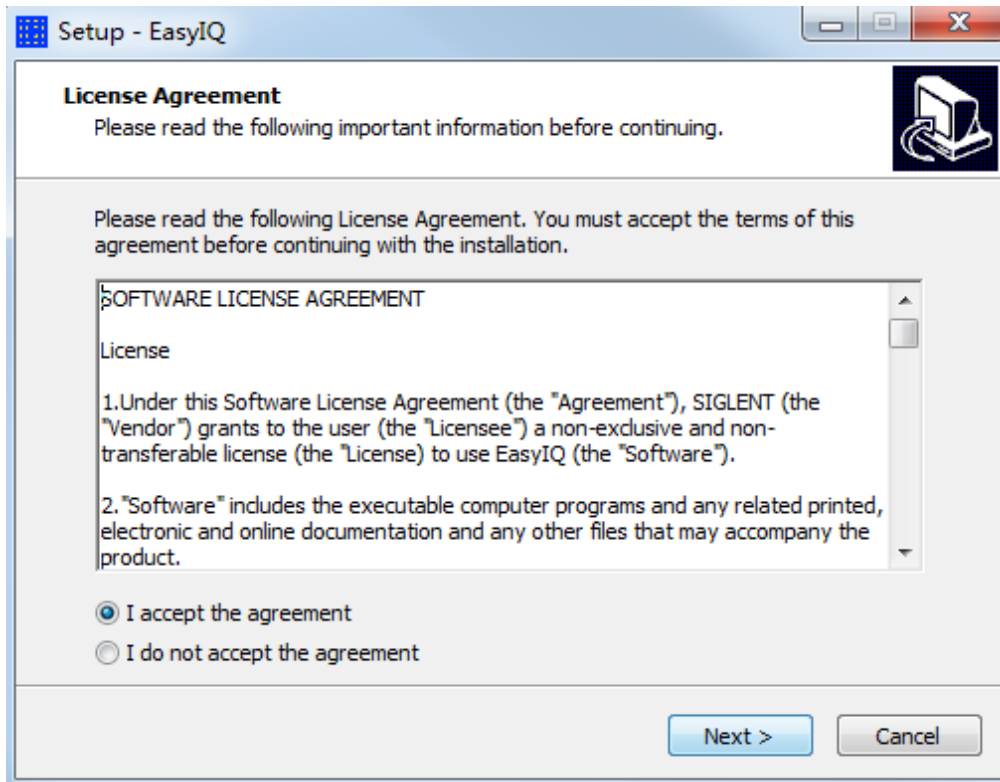
If you do not have the .NET Framework 4.5.2 installed, do the following:

- Go to: <http://www.microsoft.com/downloads/>.
- Search the site for .NET Framework 4.5.2.
- Download and install the software.

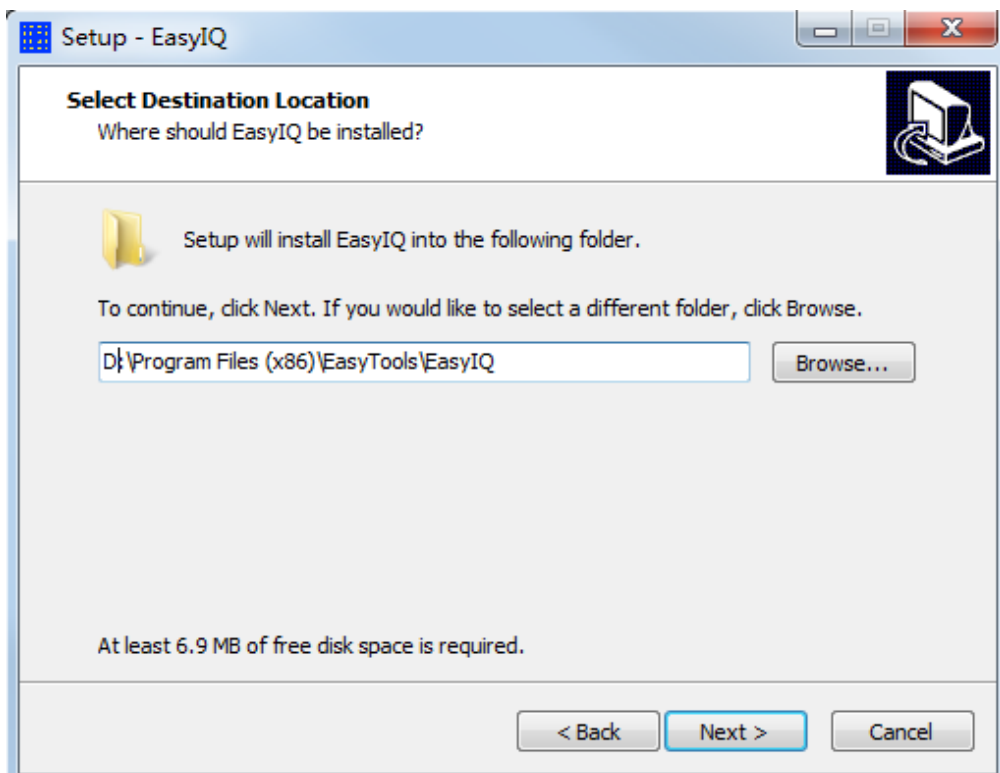
Note: A Microsoft .NET Framework version may come pre-installed with your Windows operating system. If the pre-installed .NET Framework version is not the same version as stated in the text below, you must install the required version. Different versions of .NET Framework can simultaneously reside on the Windows operating system.

EasyIQ Installation

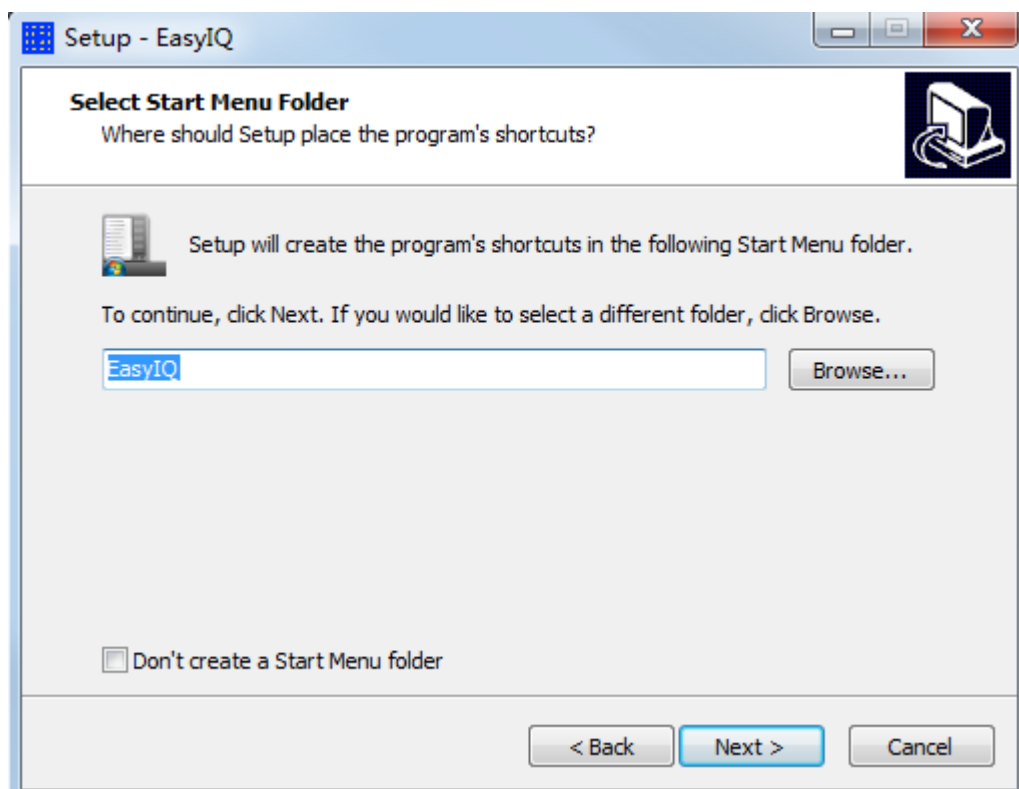
- a. Download the latest EasyIQ software. It is available on the product page for the appropriate Waveform Generators on the SIGLENT website (www.siglent.com)
- b. Run the file "EasyIQsetup.exe", the dialog shown as below. Click Next after reading the agreement.



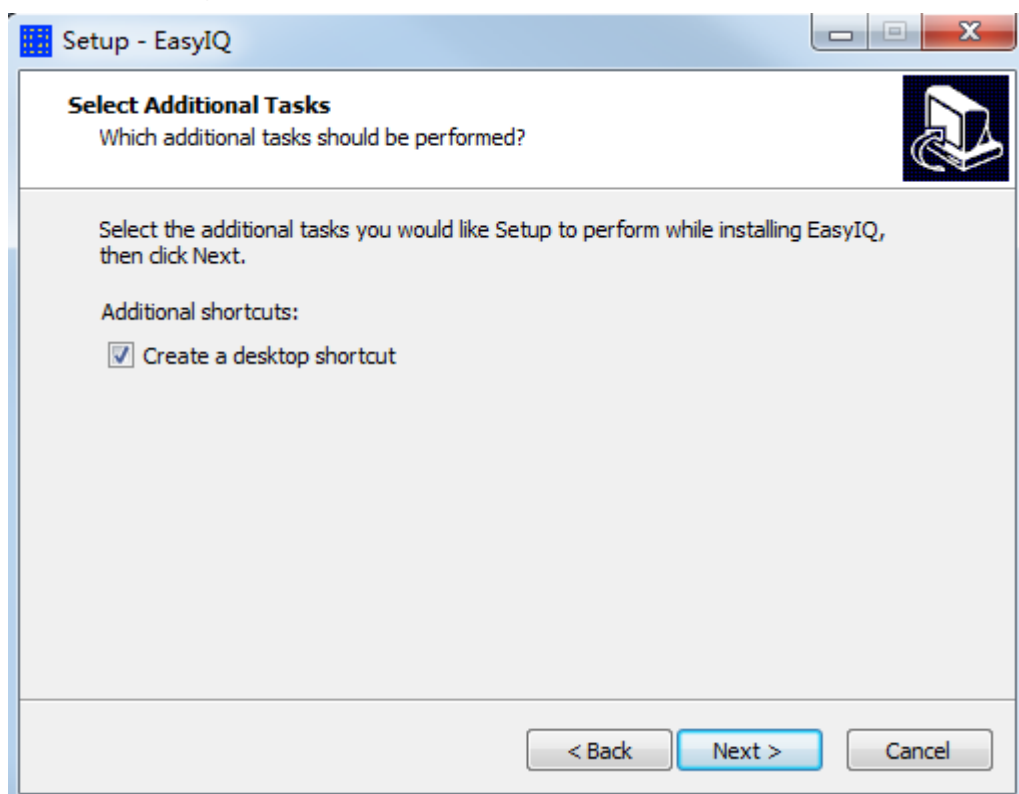
- c. Select an installation folder, click Next, the dialog as shown below.



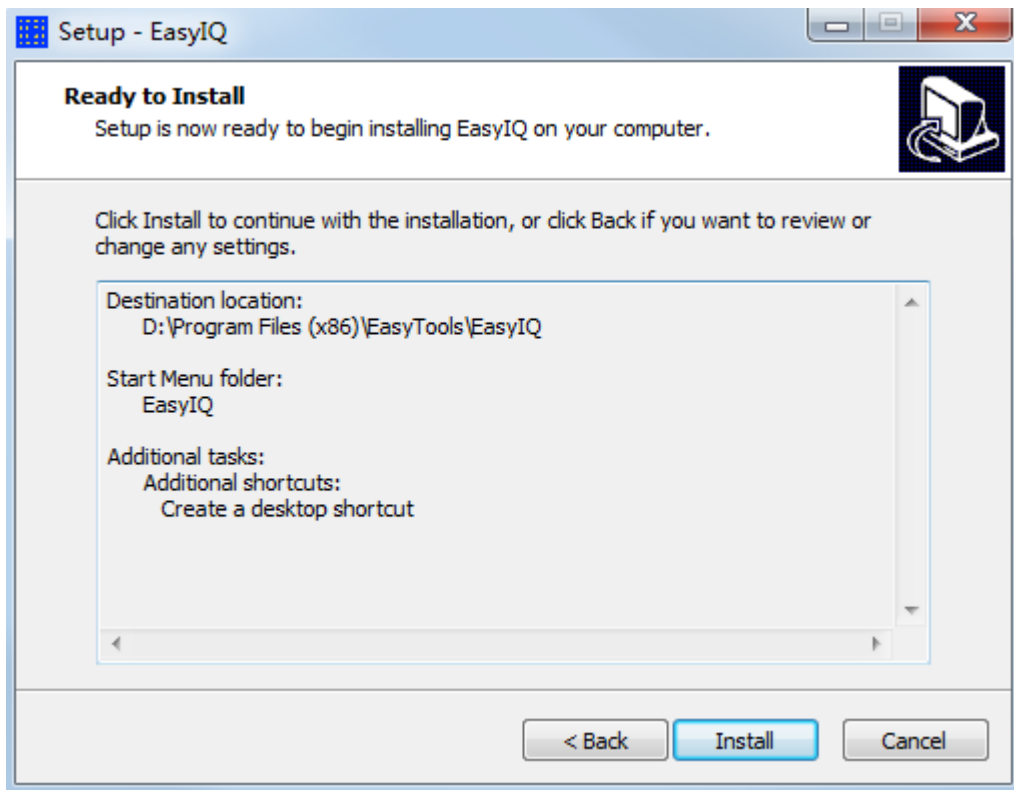
- d. Select a Start Menu folder, click Next in the dialog box as shown below.



- e. Select creating a desktop shortcut or not, and then click Next.



- f. Click Install.



- g. Installation complete. Click Finish to launch EasyIQ

